

CERTIFIED RECORD OF LAND CORNER MONUMENTATION

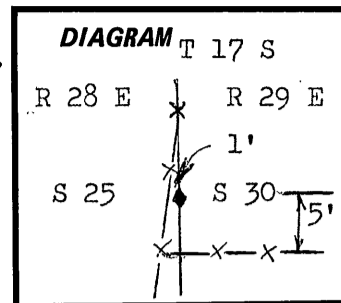
History of original corner establishment:

Original corner established by Robb and Eckelson in 1880, under contract 366, dated August 18, 1880.

Surveyor General's records state :

Set granite stone 36x28x18 in mound of stone for 1/4 sec. cor. from which

A PP 42" diameter bears S. 5° W. 26 lks.



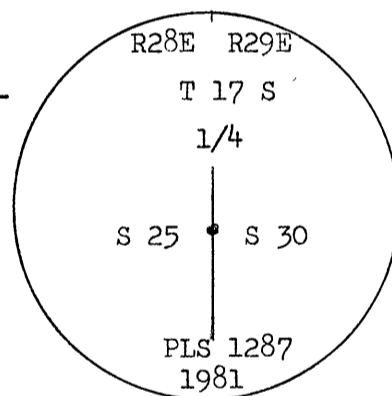
Description of corner evidence found:

I found a rock 32x24x16 marked with a 1/4 on the west face surrounded by a mound of stone.

I found a down snag scribed 1/4 S bears S. 18° W. 22.8 feet distant

Description of monument and accessories I established to perpetuate the original location of this corner:

At the location of the marked rock I set a standard F.S./monument consisting of a 3" disk mounted on a 2x30" pipe with a 4x4 1/2" foot-plate, buried 18" upright in the ground with 12" protruding. The original corner rock is buried alongside. Disk is stamped as shown:



A 10" PP bears N. 59°30' W. 21.5 feet distant, scribed 1/4 S 25, BT

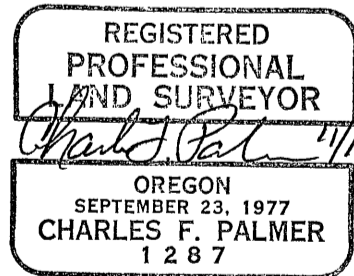
An 8" PP bears N. 46° E. 21.8 feet distant, scribed 1/4 S 30 BT

Both BT's are banded with red paint, carry BT and Attention signs and have brass disks stamped PLS 1287 nailed at the base of the BT blaze.

Monument set 9/9/81

Witnesses: H.W. Palmer
P. Zabala

Monument set as part of U.S. Forest Service "Three Piece" Cadastral survey, see Survey Plat dated Nov. 1981, Grant County Survey No. 708



Office of SURVEYOR County of GRANT
 State of OREGON, I hereby certify that the within instrument was filed in this office
 for record on the 18 day of Dec, 1981
Robert D. Baggett by _____
 (COUNTY OFFICIAL) (DEPUTY)